

## Appendix I

### THE POTTERY OF EL-WAD

Shalom Yankelevitz\*

The potsherds uncovered during the new excavations at el-Wad were collected from the entire area excavated within Chamber III, mainly from the surface layers, above the Natufian. A few potsherds were also found intermingled with the Natufian finds. Because the potsherds assemblage is clearly disturbed and mixed, and includes finds from a large variety of periods without any clear stratigraphic arrangement, the pottery will be dealt with as one ensemble. The following discussion of the main finds aims at determining during which periods the cave was in use.

Most of the potsherds represent small, sometimes rolled, body parts. Yet, about half of them (232) were identifiable, and their chronological affinity could be determined. The age distribution of the identifiable pieces is given in Table 15. The Roman-Byzantine finds dominate clearly the potsherds assemblage, followed by the Early Bronze.

The finds give us good reason to believe that the cave was used throughout the historic periods. That there are no Late Bronze Age finds is probably a matter of chance only, and can be related to both the location of the excavation in the cave and to sampling error.

#### *The Neolithic Period* (Fig. 95:1-3)

The potsherds of the Neolithic period are hand-made, generally are very crude and have been badly fired; the ware is porous. Decoration consists of white and brown slip, grass-smoothed on the outside, with red stripes on the outside. Although usually assigned to the Yarmukian Culture this type of decoration can also be found on the Wadi Raba Stage pottery (Garfinkel, 1992), as at Newe Yam (Prausnitz, 1977; Galili Ehud, personal communication, 1996) and other sites on the Carmel coastal plain (Gopher, 1993, 1995; Gopher and Gophna, 1993).

\* Megadim, D.N. Hof Hacarmel, Israel.

Table 15: Age distribution of potsherds at el-Wad.

PERIOD	N
Neolithic	7
Chalcolithic	7
Chalcolithic-Early Bronze	3
Early Bronze	27
Middle Bronze II	9
Iron Age	3
Persian	3
Hellenistic	3
Roman/Byzantine	125
Middle Ages (Arab?)	12
Total	232

#### *The Chalcolithic Period* (Fig. 95:4,5)

Among the potsherds of the Chalcolithic period are a cornet fragment and a V-shaped bowl rim, which are typical to the Ghassulian Culture.

The Hadera area about 20km south of el-Wad is commonly held to be the northernmost Ghassulian Chalcolithic occurrence. Nevertheless, data from more northerly sites have been accumulating recently: Sefunim Cave (Ben-Tor, 1984), H. 'Usa (Ben-Tor, 1966; Getzov, 1991), Tell Essur (Yanai, 1996) and Peki'in (Gal et al., 1996). The evidence indicates that the culture was spread throughout the country, and el-Wad Cave fits well into the scheme.

#### *The Early Bronze Age* (Fig. 95:6)

Of only three of the potsherds was it impossible to determine with certainty whether they belong to the Chalcolithic or the Early Bronze Age, whereas 27 of the others belong to the Early Bronze without a doubt. These include EBI body sherds of well-fired, hand-made jars with flat bases, and smoothed surfaces. A large EBI site has been excavated recently at Tell Megadim, 6km NW of el-Wad (Sam Wolf, personal communication, 1994).

#### *The Middle Bronze Age*

The Middle Bronze Age is represented by finds from the Middle Bronze II, which include mainly jar body sherds. The Carmel Coast area abounds with MBII sites (Marcus, 1991), including Tell Nami (Artzy, 1991), Megadim (Broshi, 1994), and Atlit (Johnes, 1932; Raban, 1985). Based on rock engravings in the Nahal Me'arot area, it has been suggested that the Mount Carmel caves were on the main road that led from Tell Nami inland (Artzy, 1991).

### ***The Iron Age***

The Iron Age is represented by well-fired bowl and jar body sherds. Sites of this period are known from excavations at Tel Dor (Stern, 1995) and Shikmona (Elgavish, 1994) as well as from surveys in the vicinity of Kerem Maharal and Upper Nahal Oren (Olami, 1984).

### ***The Persian Period*** (Fig. 96:1).

Three potsherds date from this period, all of the cylindrical neck jar type. Geopolitically the Carmel coast was an important area during the period. Among the main sites are: Shikmona (Elgavish, 1994), Megadim (Broshi, 1994), Atlit (Johnes, 1932) and Dor (Stern, 1982, 1995).

### ***The Hellenistic Period*** (Fig. 96:2)

Three items belong to the Hellenistic period. They include 2 jar fragments and 1 bowl. Shikmona (Elgavish, 1994) and Dor (Stern, 1995) were the principal Hellenistic sites in the area.

### ***The Roman-Byzantine Period*** (Fig. 96:3-8; Fig. 97).

A considerable number of sherds belong to this period, most of them jar sherds (Fig. 96:3-8), with a large number (19) of oil lamps (Fig. 97). This corresponds well with their occurrence in the dark part of the cave. The identifiable sherds are all Roman, but part of the other ribbed jars body sherds are undoubtedly Byzantine. Of special interest is the oil lamp in Fig. 3:3, which is assigned to the imperial lamps of the 1st-2nd century AD. It depicts a mythological scene of a male warrior holding a female by the hair and may represent some part of the Amazons' War or Perseus slaughtering the Gorgone, both common Roman scenes. Dozens of sites from this period are known in the Carmel and Carmel coast area (Kloner and Olami, 1980; Olami, 1984; Lahav and Farkash, 1986).

### ***Medieval Period***

Twelve sherds belong to the Middle Ages, mainly to the Late Arab period. The sherds are of crude manufacture, some hand-made, badly fired, straw-smoothed and usually with a lot of straw and other organic material traces in their core.

The composition of the pottery assemblage accords well with Garrod's description of the upper Layer A of the cave, which contained a mixture of archaeological material with sherds representing all the periods "from Early Bronze to modern Arab, but ribbed Byzantine ware was far the most abundant" (Garrod and Bate, 1937: 6). However, the Neolithic finds (sherds as well as flint implements) were apparently ignored by Garrod. The Late Neolithic, Wadi Raba sherds found at the cave seem to agree well with the settlement of the Carmel coast during this period (Gopher and Gophna, 1993; Gopher, 1993; Galili et al., 1997). Potsherds from historic periods were also found in the neighbouring Tabun (Garrod and Bate, 1937) and Jamal caves,

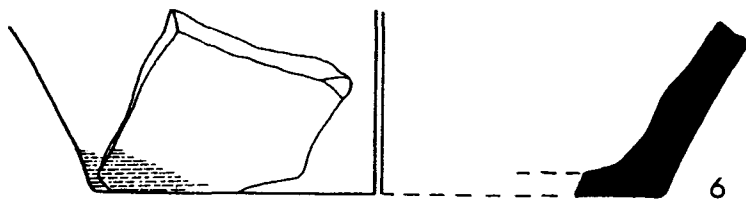
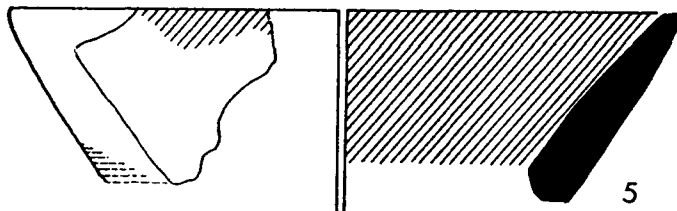
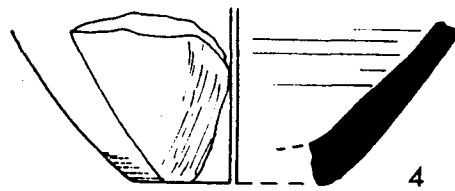
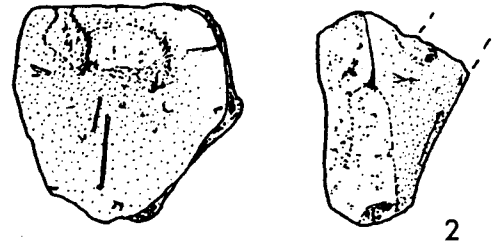
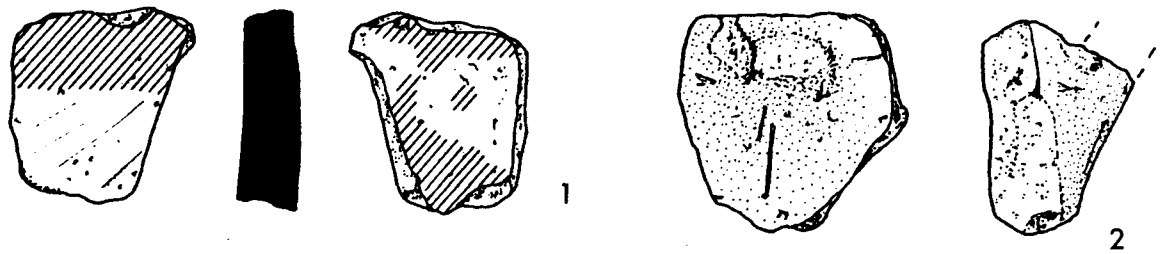


Fig. 95: Neolithic to Early-Bronze potsherds.

No.	Reg. Number	Period	Description	Parallels
1	E40a, 164-1 Bowl	Neolithic Wadi Raba Phase	Bowl: hand-made, well-fired, dark red stripe on white on outside, traces of red inside. White porous clay, smoothed on both sides. Slip colour 7.5YR4/4, slip inside 10R5/8. Clay 10YR8/3.	Garfinkel, 1992: Fig.34:9
2	G37d-128 Bowl	Neolithic Wadi Raba	Bowl knob handle: hand-made, porous, straw smoothed, medium-fired, voids of chaff or grass. Colour: surface 5YR 7/6, clay 7.5 YR 7/4..	
3	E40a, 164-2 Plate? jar	Neolithic Wadi Raba	Thick-walled plate: hand-made, brown burnished outside, red paint traces inside, many small lime grits. Slip colour 7.5 YR 5/4, clay colour 5 YR 6/6.	
4	E40b, 162-2 Cornet	Chalcolithic	Cornet: slow wheel made, well-fired, straw smoothed surface, many small lime grits + some chaff or grass voids. colour surface+clay 5 YR 7/6.	
5	E40b, 162-1 V shaped bowl	Chalcolithic	V-shaped bowl: slow-wheel made, medium-fired (black core). Red slip inside, red stripped outside rim. Many white grits + many voids of chaff or grass. Colour slip 10R 5/8 clay 7.5 YR 7/4.	Baruch, 1987: Fig. 69:2-4
6	G38,157 Jar	EBI	Jar base: hand made, well-fired, many medium sized white grits, the surface is smoothed. Colour surface + clay: 2.5 YR 6/6.	Ronen and Olami, 1978: p24, No. 9; Eisenberg, 1993: Fig. 3:15-16

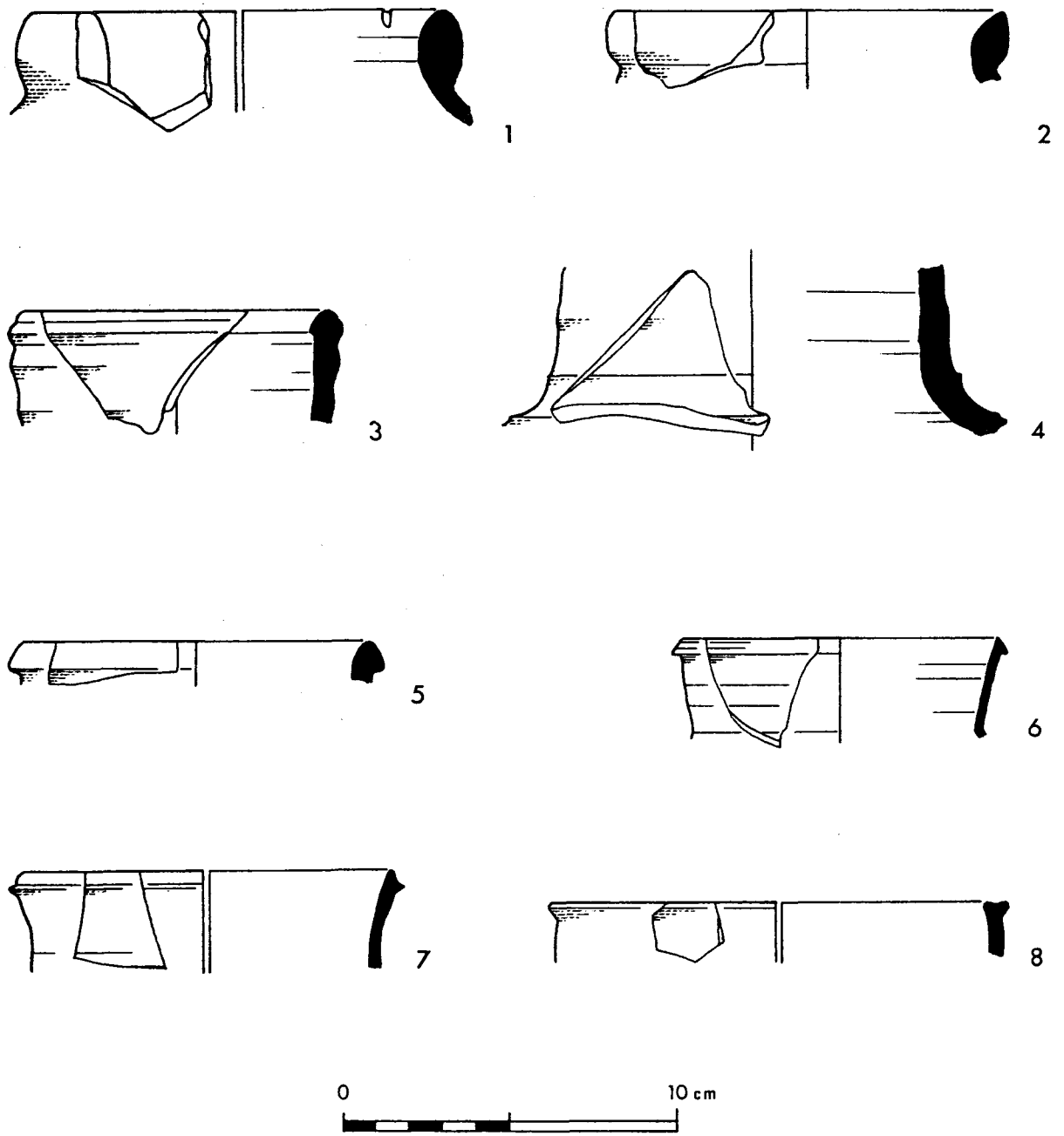


Fig. 96: Pottery of the Persian to Roman-Byzantine period.

No	Reg. Number	Period	Description	Parallels
1	I37, 133a Jar	Persian 6th-4th century BC	Jar: round thickened-rim, well-fired, mild grits. Colour: slip 2.5 YR 8/2, clay 7.5 YR 6/4,	Stern, 1995: Fig. 2; Fig. 29:6
2	I36, 130 Jar	Persian/Hellenistic	Jar: round thickened-rim well-fired, mild grits. Colour: slip 2.5 YR 8/2, clay 7.5 YR 6/4,	Stern, 1995: Fig. 6.35, 6.10.
3	I37b, 105 Jar	Roman-Byzantine 4th century AD	Jar: thickened-rim, groove underneath, very well fired, no grits. Colour: 5YR7/8,	Meyers, et al., 1976: Plate 7.20, IV.
4	H37, 119 Jar, type 1a, high neck		Jar: high neck ridge on its base, very well fired, no grits. Colour: 5YR 7/8.	Riley, 1975: Figs. 6, 8, 9.
5	G37d, 128 Jar	Roman	Jar: thin-walled, very well-fired, no grits. Colour: 5YR7/6.	Meyers, et al., 1990: Fig. D:13, Fig. K:15.
6	I37, 133 Cooking pot	Roman	Cooking pot: very thin-walled, medium-firing, few grits. Colour: 5YR4/6	Meyers, et al., 1990: Fig. U:6
7	G39a, 153 Cooking pot	Roman 250-306 AD	Cooking pot: very thin-walled, low ridge bellow the rim, bad firing, black core, no grits. Colour: 5YR 4/6	Meyers, et al., 1990: Plate CC:14.
8	I42a, 153 Cooking pot	Roman 3rd Century AD	Cooking pot: thickened everted rim, thin walled, medium fired, very small grits. Colour: 5YR 5/4	Meyers, et al., 1990: Plate Y:3, Plate AA:1. Meyers, et al., 1976: Plate 7.9 type 11.2

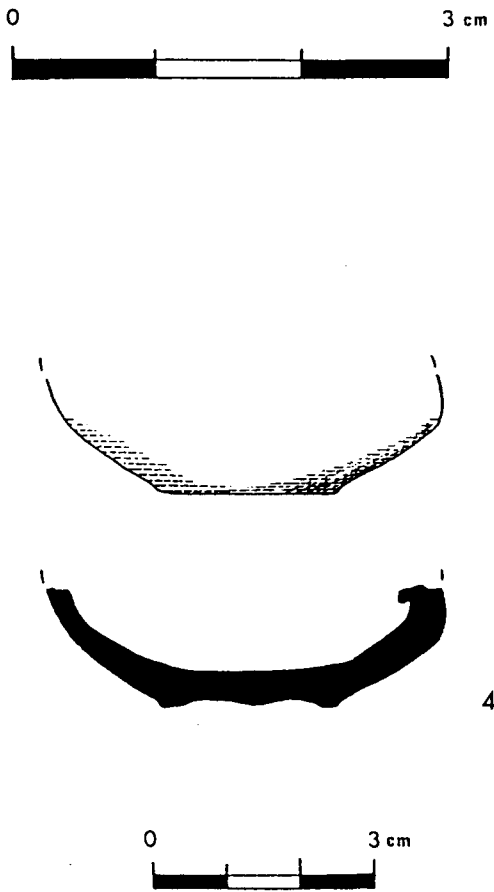
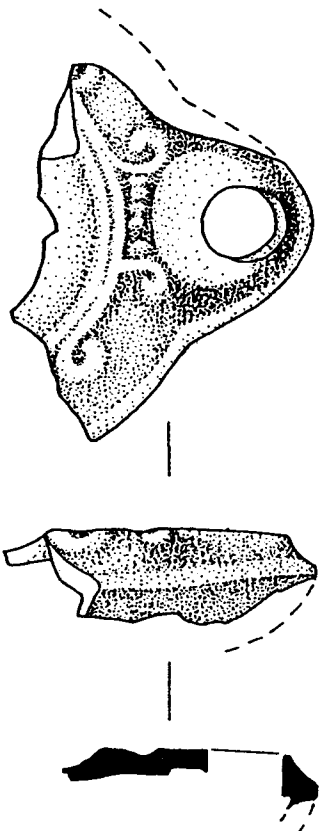
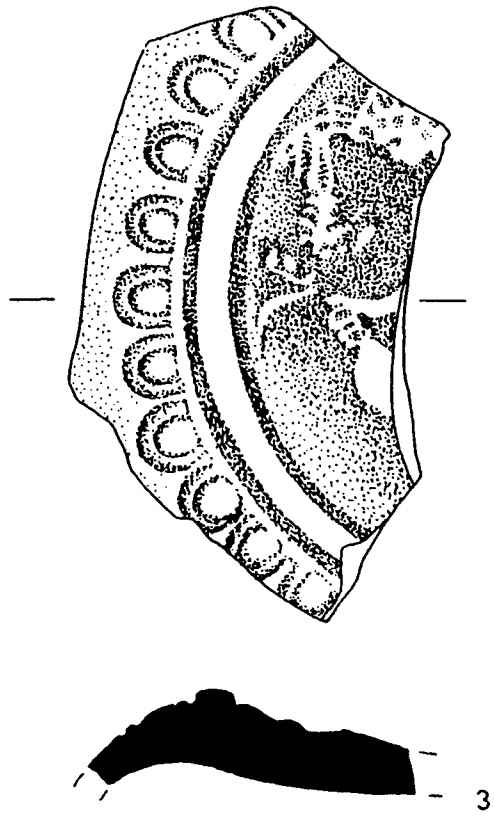
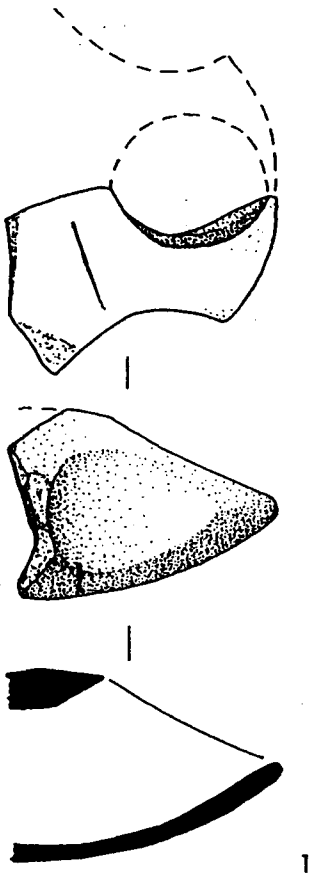


Fig. 97: Roman lamps.

No	Reg. Number	Period	Description	Parallels
1	H37b, 131	Roman 1st century BC - 1st century AD	Wheel-made Herodian lamp, Nozzle. Traces of ash. Colour: clay 5YR8/4	Rosenthal and Sivan, 1978: p. 80 and Figs. 331-334. Kahane and Ravani, 1961: pp. 136-138, variants a,b,c. Elgavish, 1962: type 5.
2	G37d, 128	Roman 1st century - 2nd century AD	Imperial moulded lamp nozzle, short rounded nozzle, volutes on both sides delineate 5 dots. Colour: clay pink 5YR5/8. Red burnished 10R4/8.	Rosenthal and Sivan, 1978: pp. 85-86, Nos. 347-351. Broneer, 1930: type XXV.
3	I37g, 105	Roman 1st century - 2nd century AD	Imperial moulded lamp discus fragment. Shoulder of disc decorated with "horse-shoe" pattern. In the centre of the discus - the very edge of a mythological scene. Slip colour red-brown 10R4/8, clay colour pink 5YR7/6.	As No. 2
4	I42b, 129	Late Roman	Wheel-made rounded lamp fragment, small ring base, convex body. Colour: clay pink 5YR8/4.	Rosenthal and Sivan, 1978. No. 404 and p.99. Feig, 1990: p. 74, Fig. 10:9.

as was probably the case in many of the Levantine caves. A rather similar distribution of periods, from the Chalcolithic onwards, was indicated by the pottery found at the cave of Sefunim, some 8 km north of el-Wad (Ben-Tor, 1984).